

## Prilog 3

---

**Broz, Marko**

**Supplement / Prilog**

*Publication year / Godina izdavanja:* **2016**

*Permanent link / Trajna poveznica:* <https://urn.nsk.hr/urn:nbn:hr:128:585064>

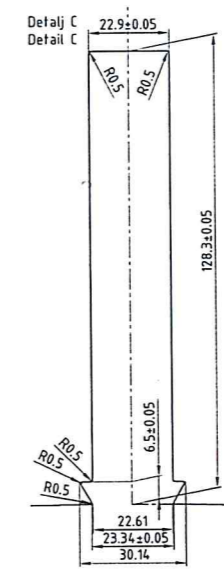
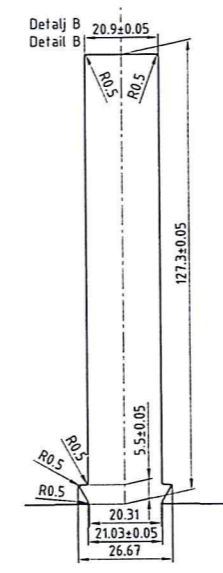
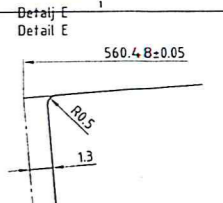
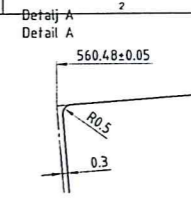
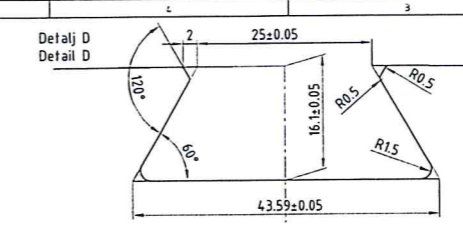
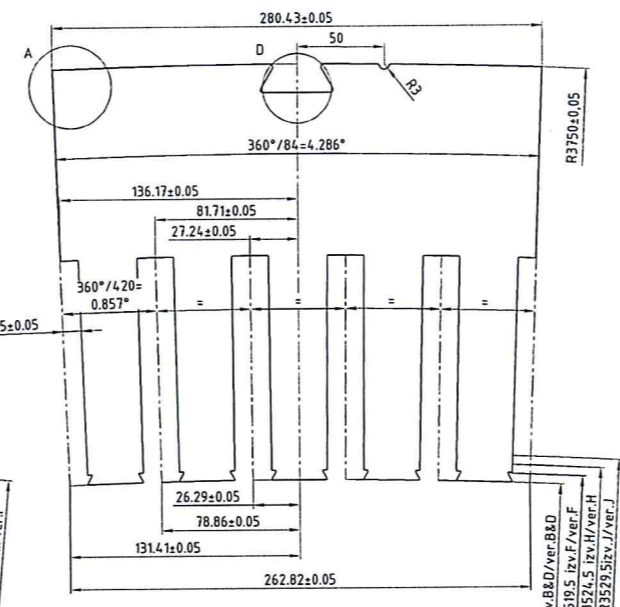
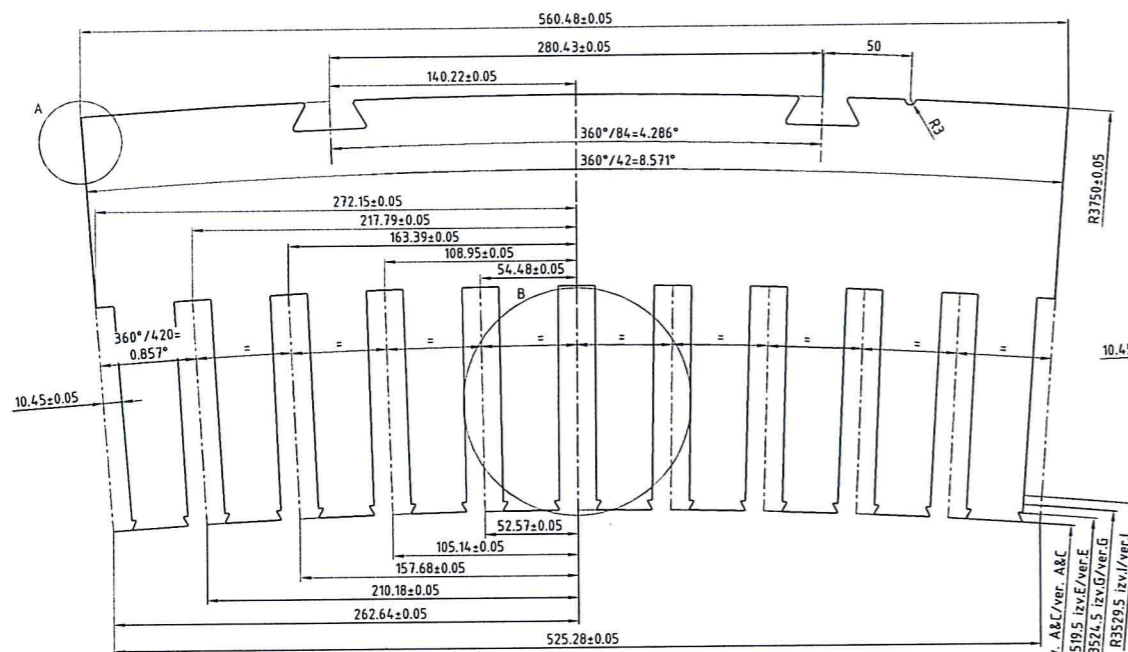
*Rights / Prava:* [In copyright](#)

*Download date / Datum preuzimanja:* **2021-01-25**



*Repository / Repozitorij:*

[Repository of Karlovac University of Applied Sciences - Institutional Repository](#)



**NAPOMENA:**  
 Materijal: dinamo lim debljine 0.5 mm, kvalitete M230-50A (EN 10106), obostrano izoliran, jednostrana debljina premaza 3µm, tip C3. Isporučka prema tehničkom uvjetu EN10204 3.1. Površina lima izv. "a" jednostrano je 1000.5 cm<sup>2</sup>, masa 0.38 kg. Izraditi količinu izvedbe segmenata "a-n" prema Tabeli 1. Visina srha max 30µm. Nakon rezanja i brušenja limove osim izvedbi "j" i "k" obostrano lakirati lakom VOLTATEX E1151. Izoliranje izvesti prema proizvodnom procisu. Kontrola i preuzimanje prema KIP-u. Limove izv. "c"- "j" namazati ljepljivom. Visina ljepljenog dijela 25 mm na svakoj strani paketa. Svi oštri bridovi li neoznačeni s radiusom 0.5 mm. Kontrola dimenzija prema KIP-u.

**NOTE:**  
 Material: Magnetic steel sheet, 0.5 mm thick, quality M230-50A (EN 10106), insulated on both sides, coating thickness on one side 3 µm, type C3. Technical terms of delivery EN10204 3.1. One sided surface area of vers. "a" : 1000.5 cm<sup>2</sup>, mass : 0.38 kg. Quantity of core sheets version "a-n" acc. to Table 1. Burr height max 30 µm. After cutting and grinding coat sheets with varnish VOLTATEX E1151, except versions "j" and "k". Varnish protection regulated by G53282. Control and delivery by KIP-u G10058. Core sheets versions "c"- "j" glue together during stator core stacking. Height of glued layer is 30mm. Round all sharp edges (r=0.5mm). Dimension control acc. to KIP E50286.

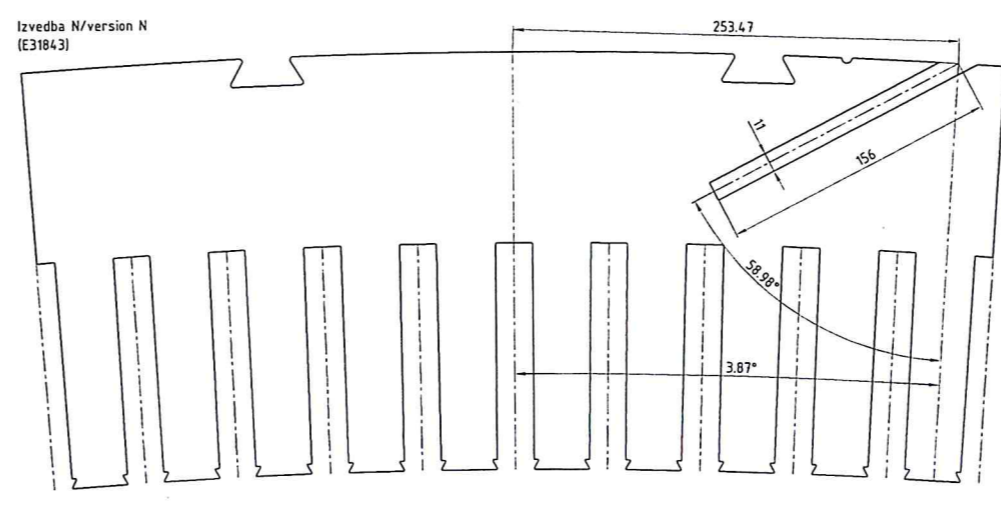
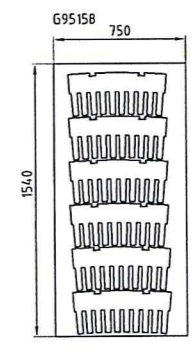
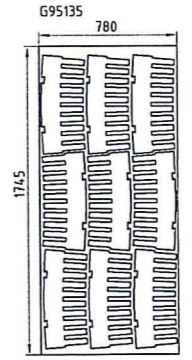
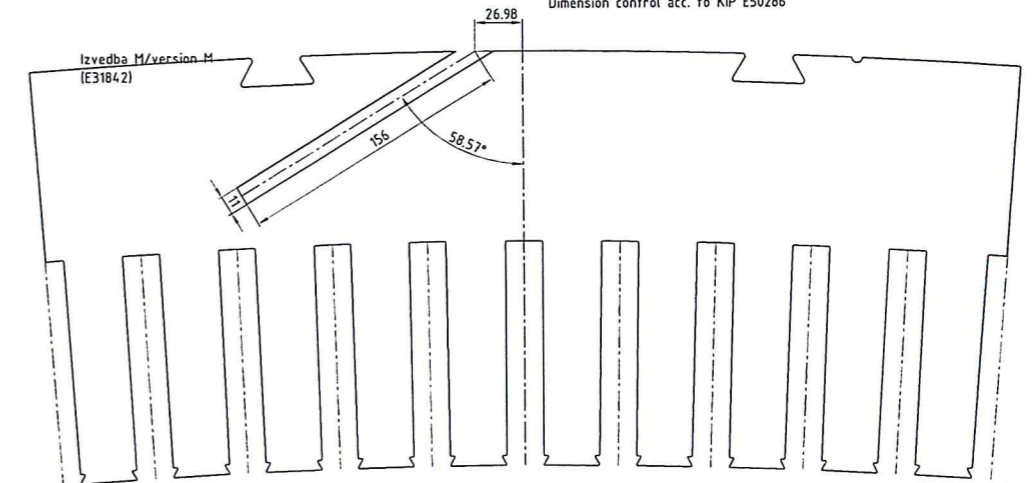
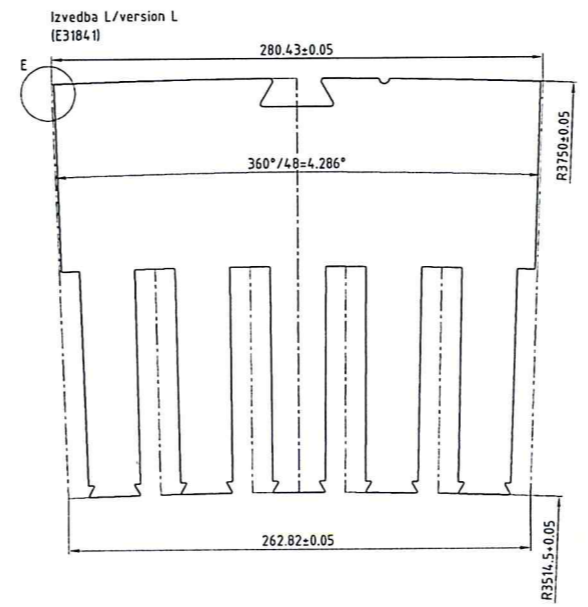
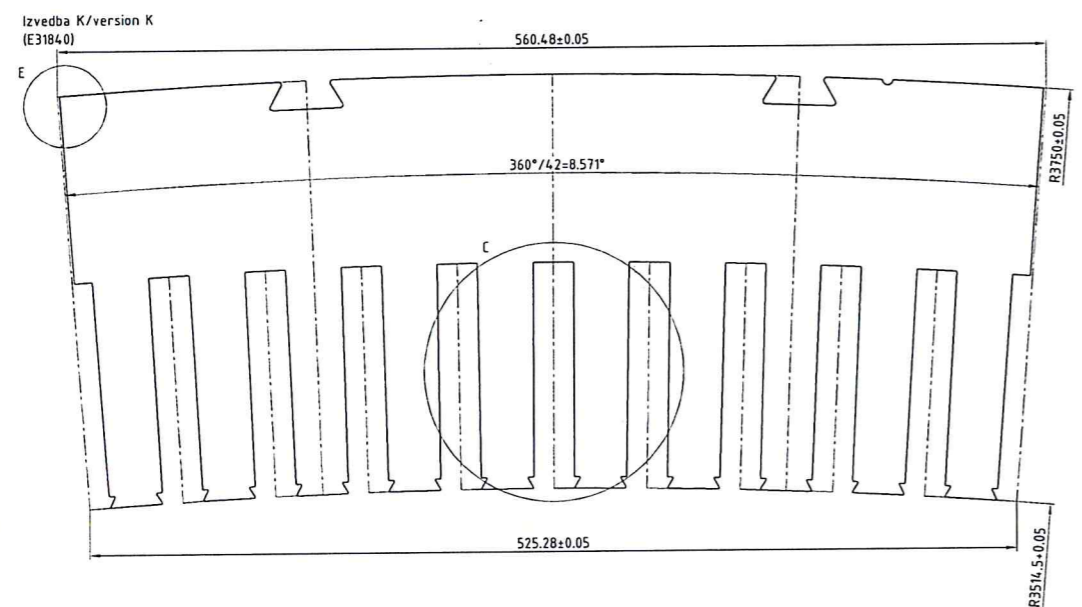


TABELA 1  
TABLE 1

IZVEDBA VERSION	MATERIJAL MATERIAL	Br. kom. No. of pcs.	Br. dijela PART No.	Oblik segmenta Segment shape		Unutarnji radijus segmenta INNER RADIUS OF SEGMENT				Oblik utora SLOT SHAPE			
				1/1	1/2	R 3514.5	R 3519.5	R 3524.5	R 3529.5	Normalni utor NORMAL SLOT	Široki Utor WIDE SLOT	Izolirani Insulated	Ljepljeni Glued
a	G95135	104200	E31830	x		x				x			
b	G95135	10450	E31831		x	x				x			
c	G95135	2410	E31832	x		x				x			
d	G95135	250	E31833		x					x			
e	G95135	810	E31834	x			x			x			
f	G95135	90	E31835		x			x		x			
g	G95135	810	E31836	x						x			
h	G95135	90	E31837		x			x		x			
i	G95135	810	E31838	x						x			
j	G95135	90	E31839		x					x			
k	G95158	1370	E31840	x		x				x			
l	G95158	140	E31841		x	x				x			
m	G95135	40	E31842	x		x				x			
n	G95135	40	E31843	x		x				x			

BIS.20691| Changed drawing template 15.2015  
 A15.20691| Changed depth of key bar slot 23.2.2015  
 Rev. Description: Date: Comited.

Anläggning och benämning: SE.040.000.025SHF  
 Anläggningens ord KKS: SE.040.000.025SHF  
 Funktionskod ord KKS: MK-Generator

REVITATION AND UPGRAING OF

**KONČAR**  
 Končar - Generatori i motor d.d.

Name: Suflaj  
 Signature: Vukšić  
 Prepared: Suflaj  
 Controlled: Vukšić  
 Standard: 1:2  
 Approved: Tišljaj

STATORSKI LIM  
 STATOR CORE SHEET

E31830

15.12.2015  
 1/1